

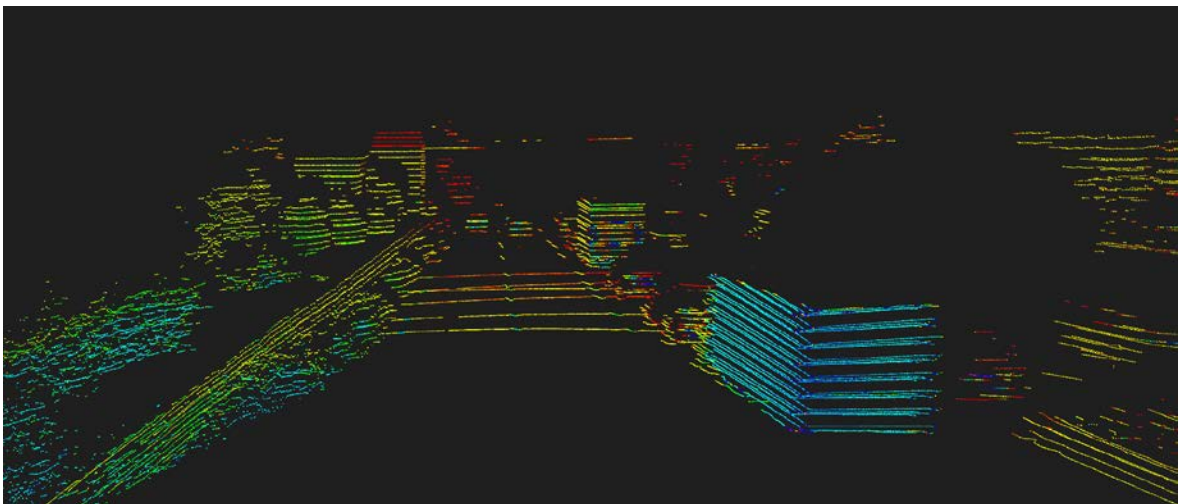
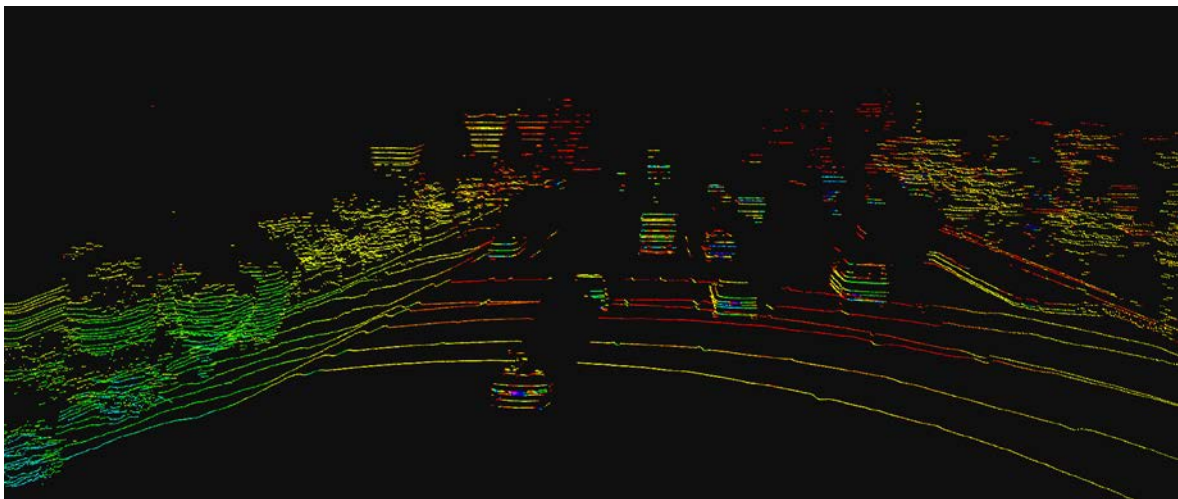
CH 32 Hybrid-Solid State LiDAR



Abstract

CH32 is designed for Automotive Grade Standards to meet demands of L3- L5 autonomous cars, which can work with low-speed cars, V2X and long operation scenarios. CH32 is the 1st LiDAR that officially passed auto-grade test in China.

Demo



Parameters

| | | |
|--------------------------------|----------------------|--|
| Model | | CH32 |
| Channel | | 32 |
| Measurement Technique | | TOF |
| Wavelength | | 905nm |
| Laser Classification | | Class 1 (Eye-safe) |
| Range | Typical | 100m / 150m / 200m |
| | Minimum | 90m / 135m/ 180m |
| Accuracy | | ±2cm(0.5m ~ 200m) |
| Data Points Generated | Single Return | 426,000 pts/s |
| | Duel Returns | 852,000 pts/s |
| Rotation Rate | | 5Hz, 10Hz, 20Hz(optional) |
| FOV | Horizontal | 120° |
| | Vertical | -6.67°~ 4.58° |
| Resolution | Horizontal | 5Hz: 0.045° / 10Hz: 0.09°/ 20Hz: 0.18° |
| | Vertical | Vertical angle resolution between 0 ~ 0.81 °, minimum 0.09 ° in the middle and a maximum of 0.47 ° |
| Operating Voltage | | 9V~36V DC |
| Operating Temperature | | -20°C ~ 65°C(industrial grade) ; -40°C ~ 85°C(auto-grade) |
| Communication Interface | | 100M Ethernet, PPS |
| Power Consumption | | 10 W |
| Shock Test | | 500m/sec ² , last11ms |
| Vibration | | 5Hz-2000Hz, 3G rms |
| IP | | IP67 |
| Weight | | 1.5Kg |
| Dimension (L·W·H) | | 155 * 107.5 * 90mm |